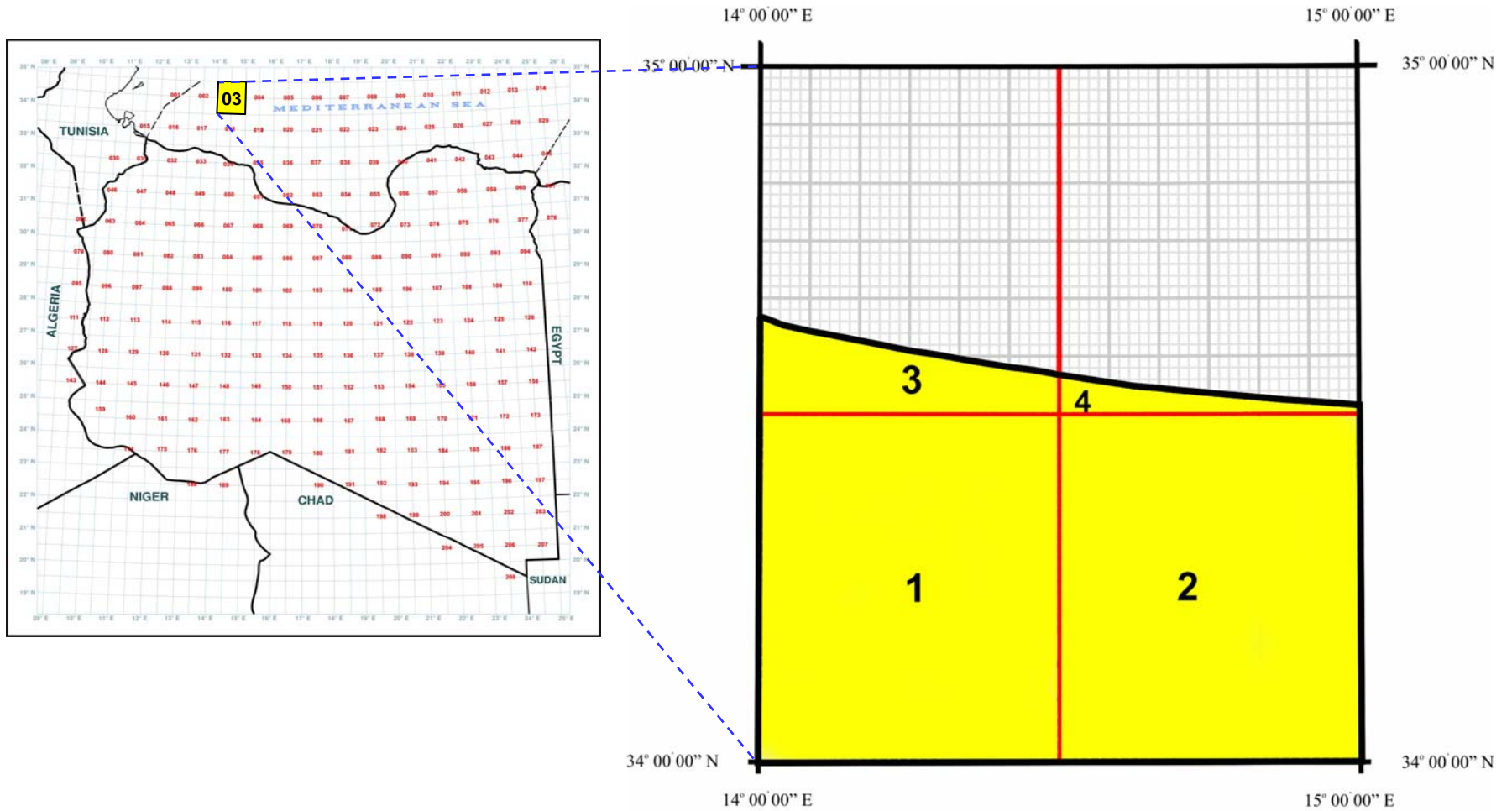


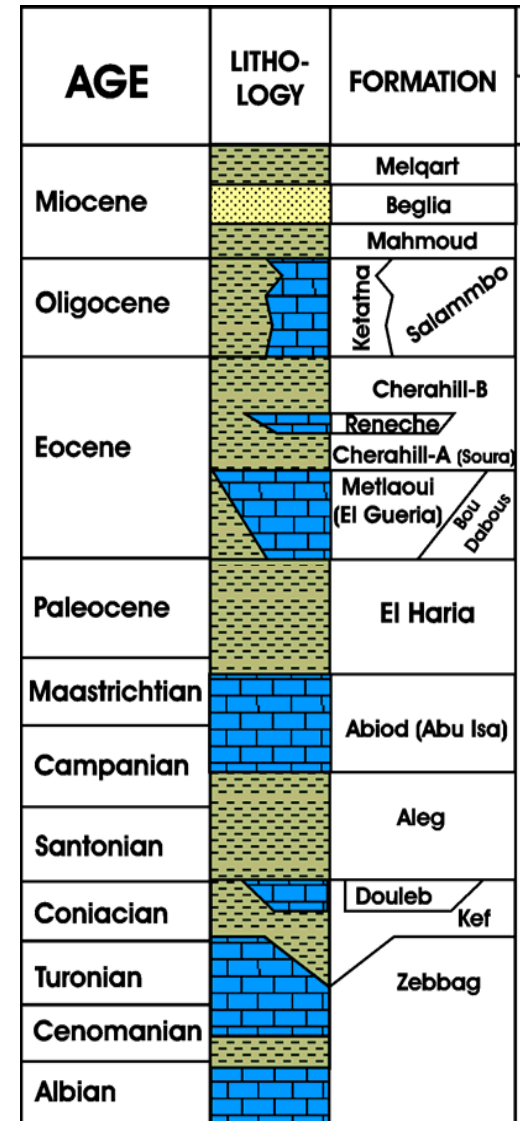
Summary Sheets
of
Contract Areas
(03, 15/16, 22, 23 & 71)

Contract Area (03) Blocks 1, 2, 3 & 4

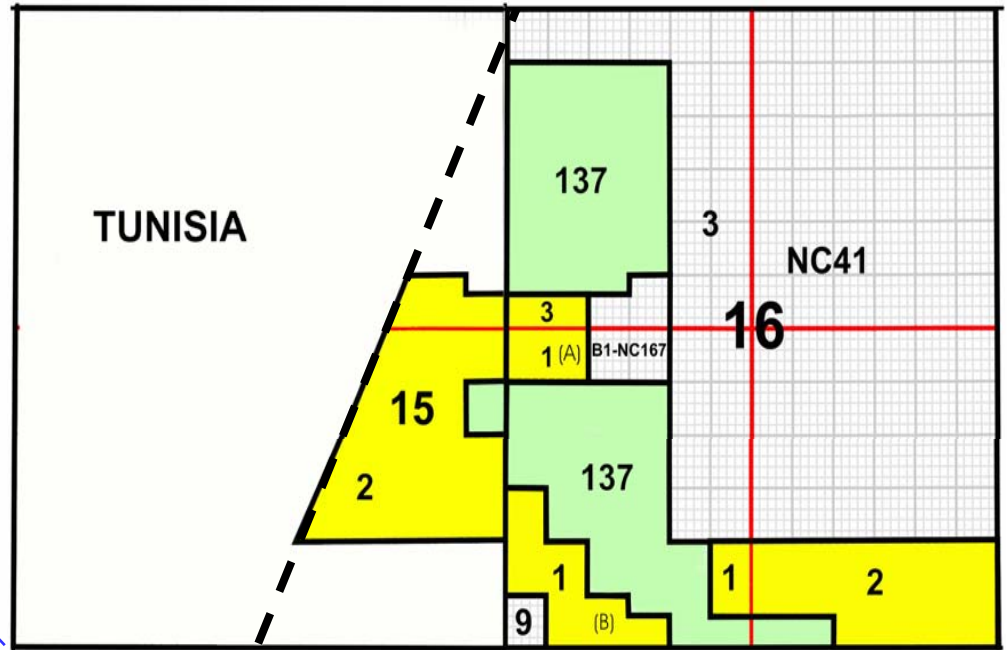
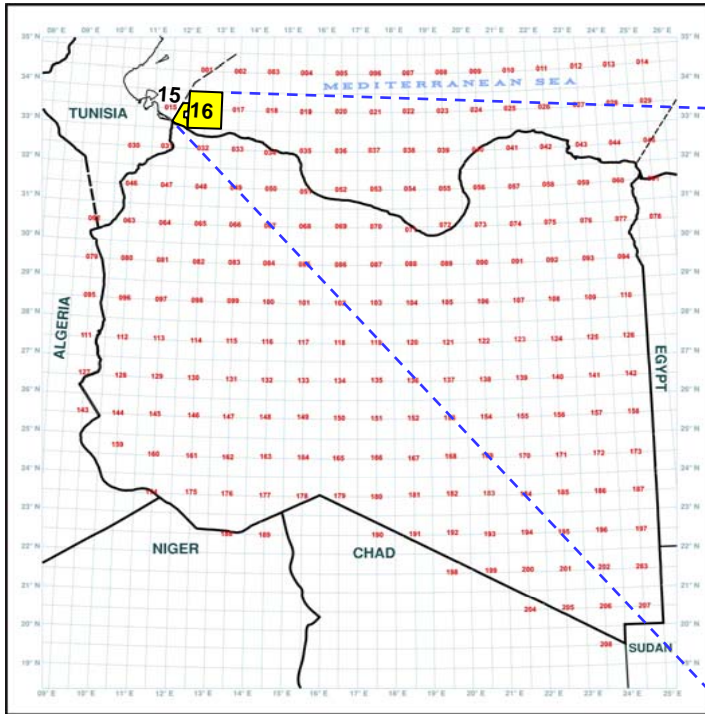


Contract Area (03) Blocks 1, 2, 3 & 4

Open Surface area	5,742 sq km
Drilled Wells	A1-NC146
Water Depth	250 - 500 m
Potential Reservoirs	L. Miocene carbonates Oligocene M – U. Eocene (Cherahil-Reineche) U. Cretaceous (Zebbag, Fracture Abiod and Miskar) Aptian-Albian (Alam and Serg)
Source Rocks	Oligocene shales (Salambo) L. Eocene (Base Metlaoui) U. Cretaceous shale (Aleg and Fahdain)
Seals	M-U. Eocene (Soar) Palaeocene Shale (El-Haria) U. Cretaceous Shale (Aleg and Fahdain)
Play Concepts	Carbonate build-ups Shallow Carbonate Platform Structural closures
Acquired Seismic	3805 km - 2D
Production facilities	Al Bouri field

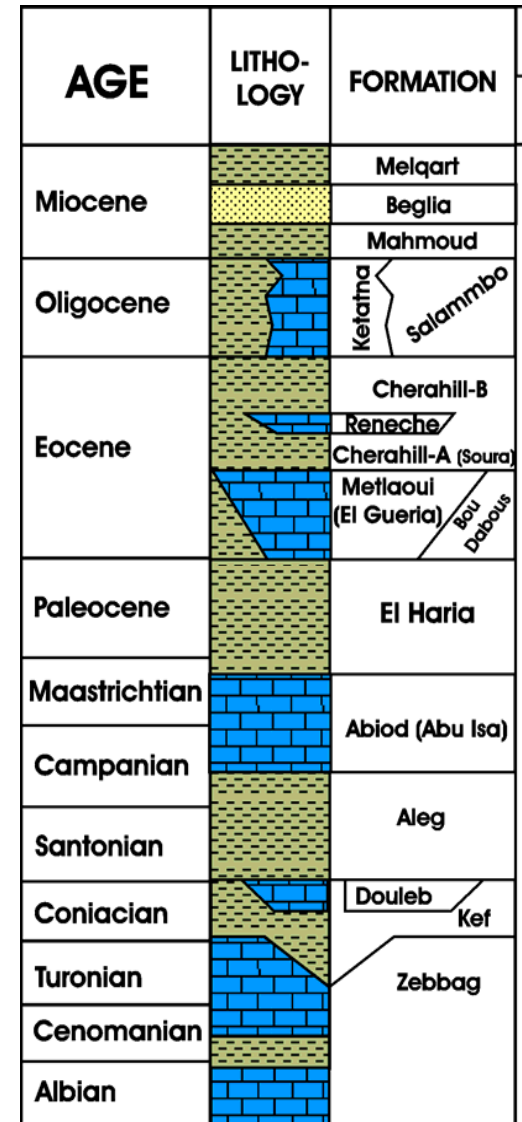


Contract Area (15 / 16) Blocks (2 & 4 / 1, 2 & 3)

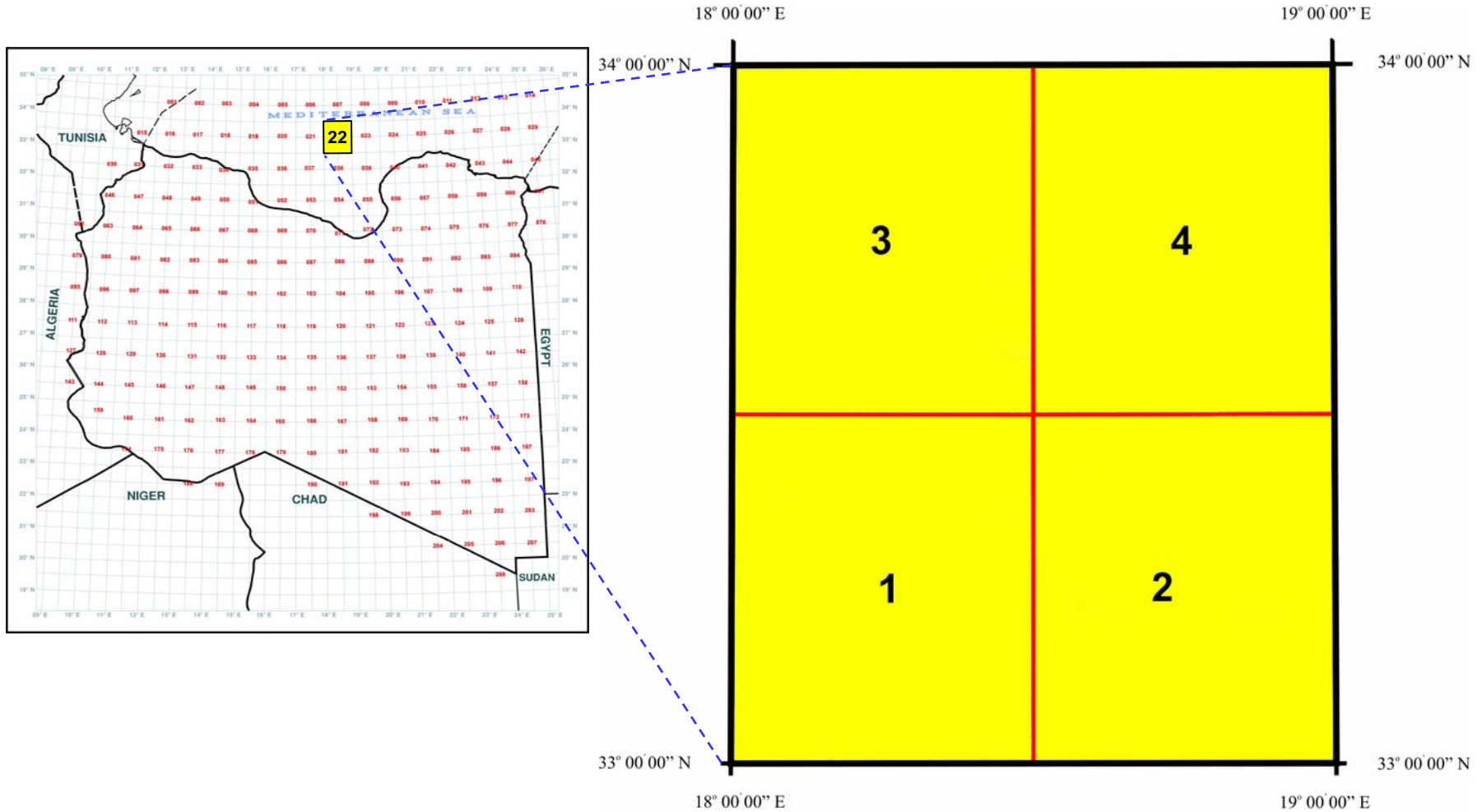


Contract Area (15/16) Blocks (2 & 4 / 1, 2 & 3)

Open Surface area	2,792 sq km
Drilled Wells	A1-NC167, F1-137,H2-137,G1-137,I1-137, L1-137 and A1-137A
Water Depth	0 - 150 m
Potential Reservoirs	L. Miocene carbonates Oligocene M – U. Eocene (Cherahil-Reineche) U. Cretaceous (Zebbag, Douleb and Miskar) Aptian-Albian (Alam and Serg)
Source Rocks	Oligocene shales (Salambo) L. Eocene (Bou Dabous) U. Cretaceous shale (Bahloul and Fahdene)
Seals	Miocene (Mahmoud) Oligocene shales (Salambo) U. Eocene (Cherahill) U. Cretaceous Shales (Aleg and Fahdain)
Play Concepts	Carbonate build-ups Shallow Carbonate Platform Salt associated closures
Acquired Seismic	2346 km - 2D
Production facilities	Al Jurf + Al Bouri fields

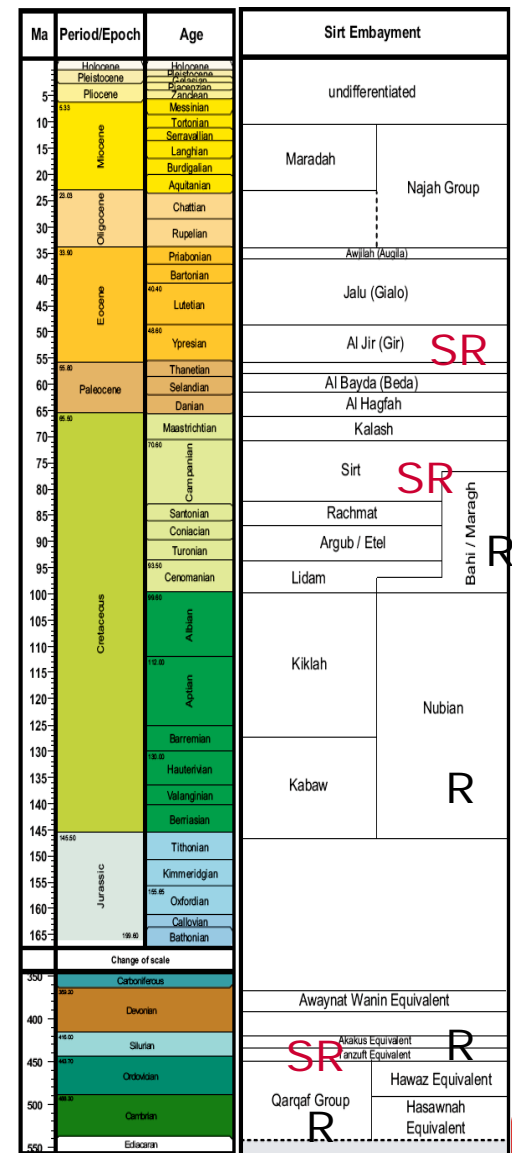


Contract Area (22) Blocks 1, 2, 3 & 4

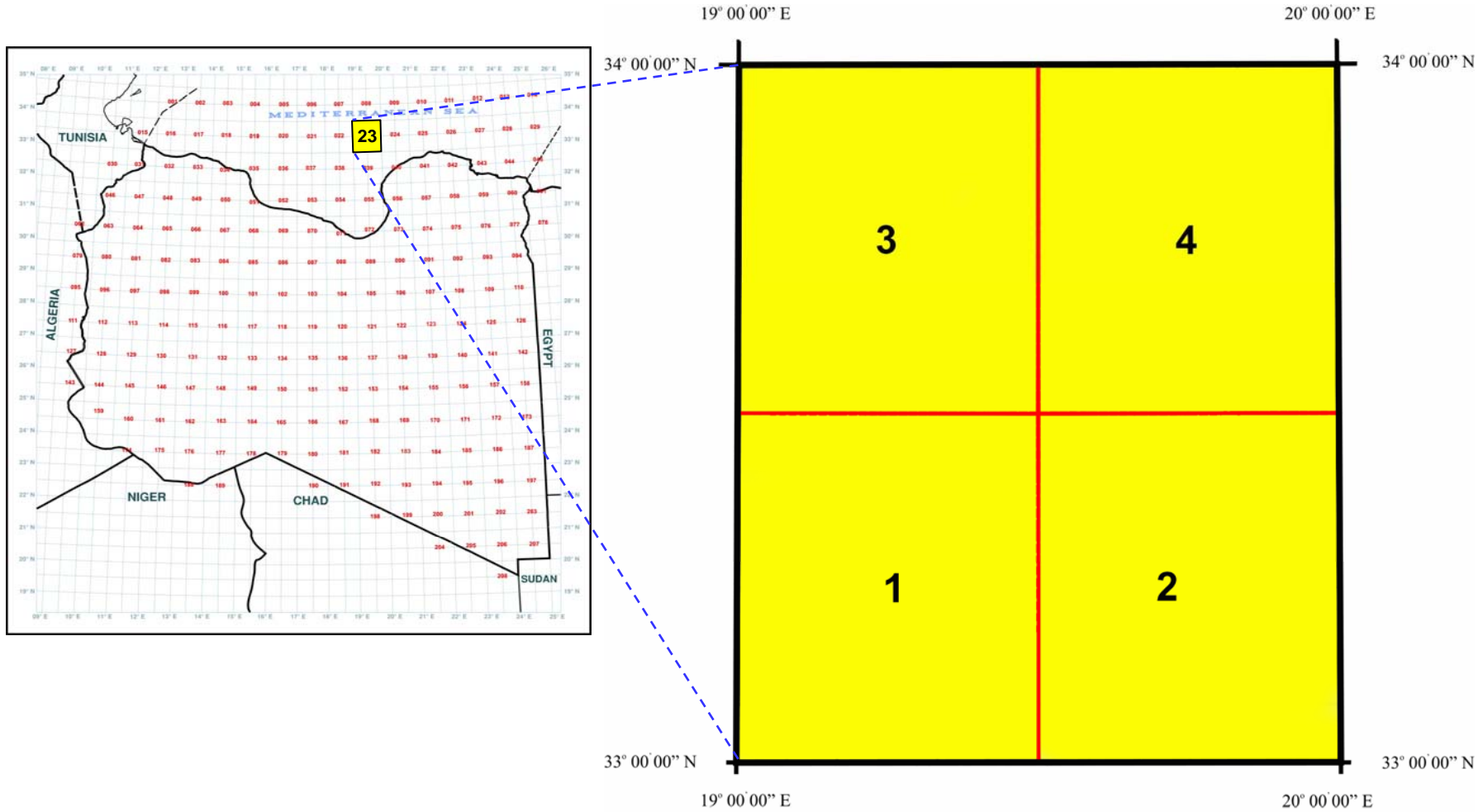


Contract Area (22) Blocks 1, 2, 3 & 4

Open Surface area	10,304 sq km
Drilled Wells	none
Water Depth	>2000 m
Potential Reservoirs	U. Cretaceous Aptian-Albian Paleozoic
Source Rocks	U. Cretaceous Shales Aptian-Albian Shales Jurassic Paleozoic
Seals	U. Cretaceous Shales Paleozoic Shales
Play Concepts	Carbonate build-ups Faulted Structural closures.
Acquired Seismic	CGG Spec Data
Production facilities	Remote

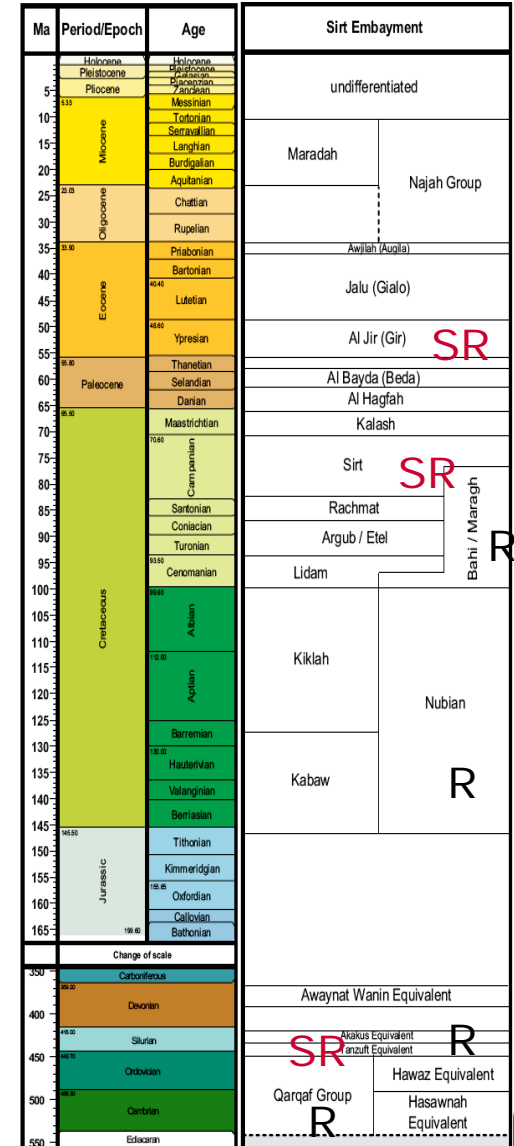


Contract Area (23) Blocks 1, 2, 3 & 4

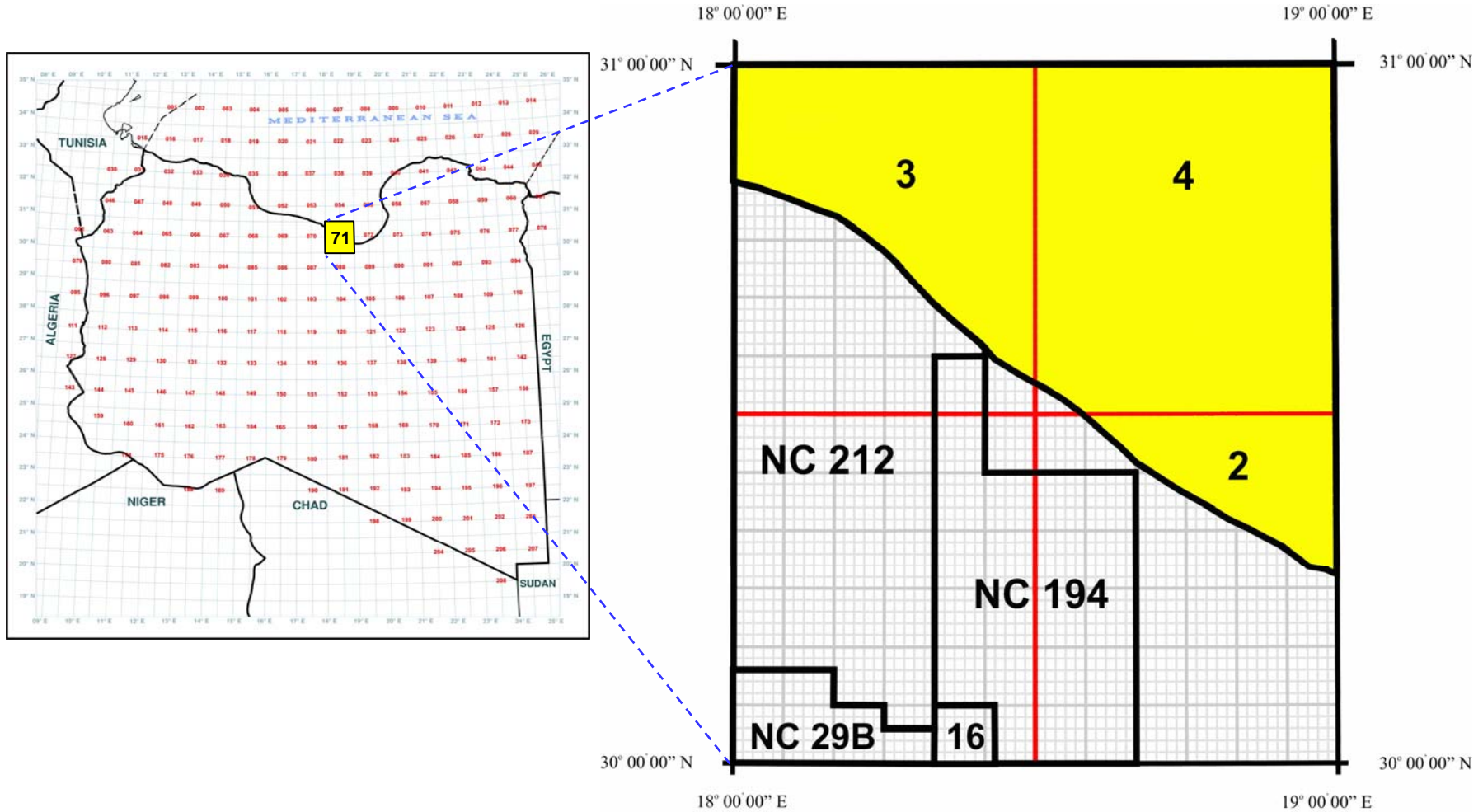


Contract Area (23) Blocks 1, 2, 3 & 4

Open Surface area	10,312 sq km
Drilled Wells	none
Water Depth	> 2000 m
Potential Reservoirs	U. Cretaceous Aptian-Albian Paleozoic
Source Rocks	U. Cretaceous Shales Aptian-Albian Shales Jurassic Paleozoic
Seals	U. Cretaceous Shales Paleozoic Shales
Play Concepts	Carbonate build-ups Faulted Structural closures.
Acquired Seismic	CGG Spec Data
Production facilities	Remote



Contract Area (71) Blocks 2, 3 & 4



Contract Area (71) Blocks 2, 3 & 4

Open Surface area	4,731 sq km.
Drilled Wells	B1-87, F1- 87, G1-87 and H1-87 and C1-87
Water Depth	0 – 250 m
Potential Reservoirs	Eocene Carbonates Paleocene Carbonates U. Cretaceous Carbonates Basal Sands
Source Rocks	Paleocene Shale U. Cretaceous Shale
Seals	Eocene Shales Paleocene Shales Cretaceous Shales
Play Concepts	Carbonate Build Ups Fault associated closures Shelf Carbonates
Acquired Seismic	2660 km - 2D
Production facilities	Close to Onshore

AGE		LITHO- LOGY	FORMATION
TERTIARY	PRIA- BONIAN	[Blue brick pattern]	GEDARI
	LUTETIAN	[Blue brick pattern]	
	YPRESIAN	[Red brick pattern]	HON Evp.
		[Red brick pattern]	FACHA Dol..
	THANETIAN	[Blue brick pattern]	KHEIR.
		[Blue brick pattern]	HARASH
DANIAN	[Blue brick pattern]	DAHRA	
	[Blue brick pattern]	BEDA	
UPPER CRETACEOUS	MAASTRICHTIAN	[Blue brick pattern]	HAGFA Sh.
		[Blue brick pattern]	KALASH
	CAMPANIAN	[Brown brick pattern]	TAGRIFT
	SANTONIAN	[Blue brick pattern]	
	CONIACIAN	[Blue brick pattern]	ETEL (ANF)
	TURONIAN	[Red brick pattern]	LIDAM (DOR)
CENOMANIAN	[Blue brick pattern]	BAHI	
PRE-UPPER CRETACEOUS		[Yellow brick pattern]	NUBIAN (KIKLA)
		[Brown brick pattern]	TANEZZUFT
		[Yellow brick pattern]	GARGAF

